



# NorthernGrid

2022 Annual Western Interregional  
Coordination

March 4, 2022

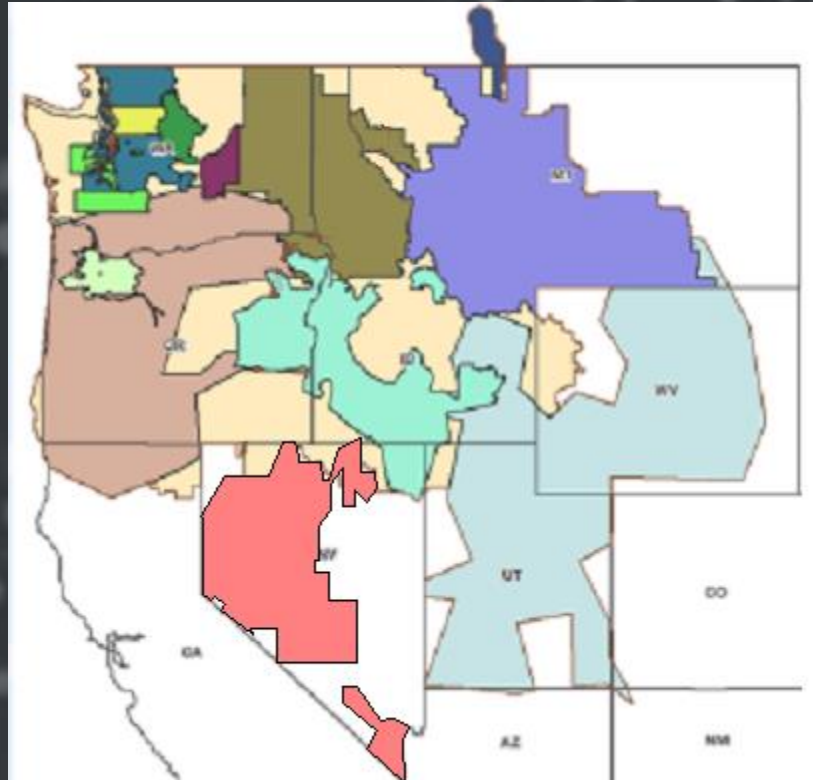


## Purpose :

*NorthernGrid is the outcome of a single transmission planning region, facilitating regional transmission planning, enabling one common set of data and assumptions, identifying regional transmission projects through a single stakeholder forum, and eliminating duplicative administrative processes.*

# NorthernGrid

Planning Member Footprint: 14 Western  
Regional Members





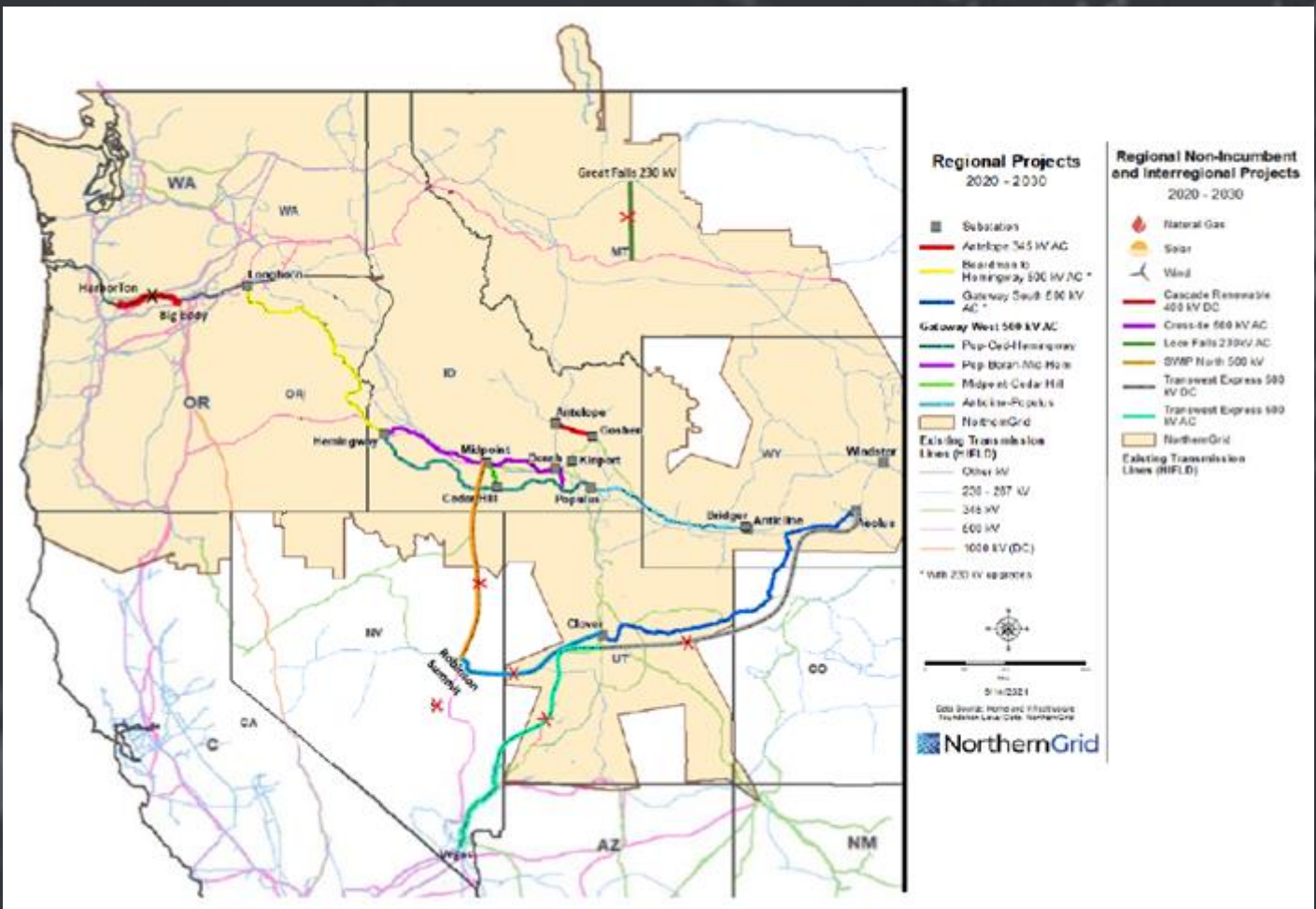
## Summary from Previous 2020-21 Planning Cycle

- *Production Cost Model used to generate scenarios*
- *Members reviewed scenarios and selected hour snapshots of interest*
- *8 Seasonal baseline powerflow case developed*
- *22 Regional Combinations Evaluated*
- *~1200 Regional Contingencies Run*



# NorthernGrid

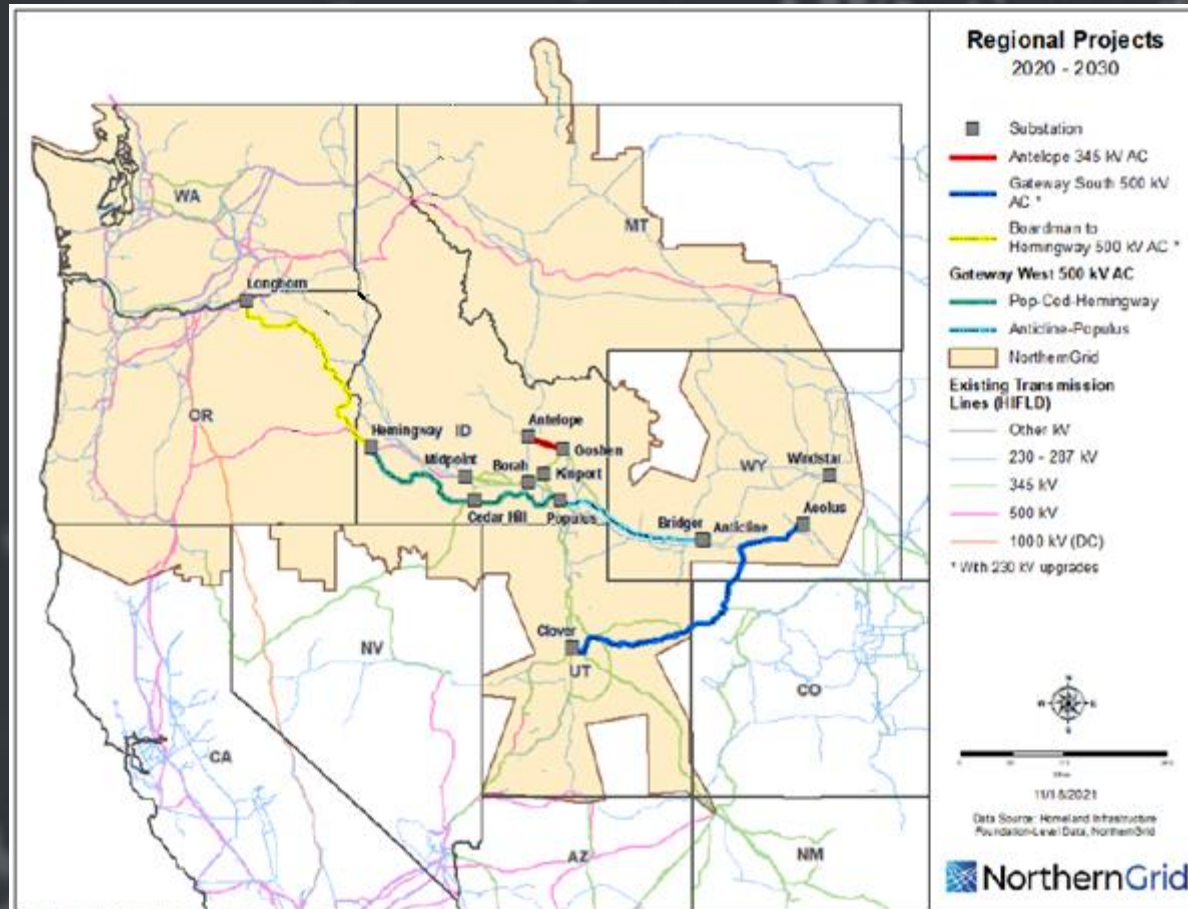
## All Projects Evaluated





# NorthernGrid

## Regional Projects Selected into the 2020-21 Regional Transmission Plan






# NorthernGrid

## Final 2020-21 Regional Transmission Plan:

*Approved by MPC on 12/8/2021*

*Notification provided to members on 12/13/2021*

*Report Posted to [NorthernGrid website](#)*


 MPC


---

**2020 2021 NorthernGrid  
Regional Transmission Plan**


*Final, accepted Plan*

---

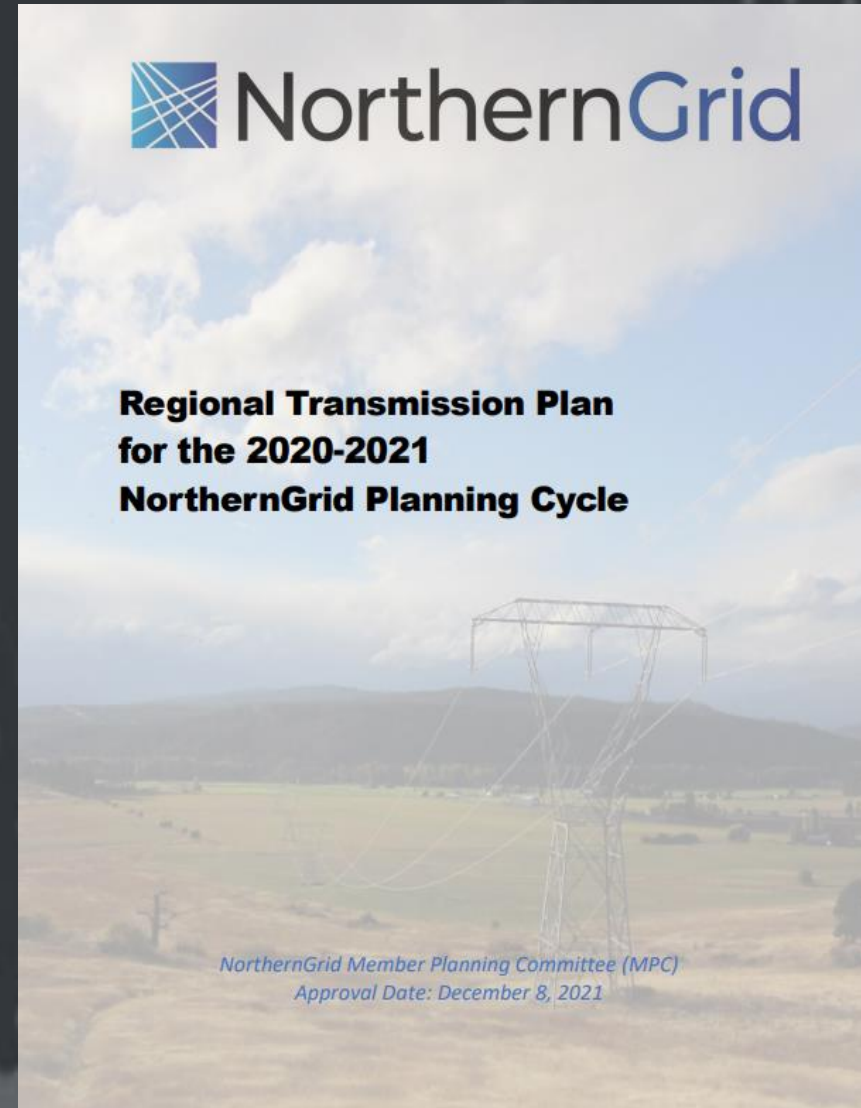
 **DOWNLOAD**

 MPC

---

 **DOWNLOAD**

- Appendix A: A... (.pdf)
- Appendix B: S... (.pdf)
- Appendix E: V... (.pdf)
- Appendix F: C... (.pdf)
- Appendix H: A... (.pdf)
- 2020 2021 Nort... (.pdf)



[Link to  
Regional  
Transmission  
Plan](#)





NorthernGrid

A new year a new assessment  
cycle...

- *What is changing around NorthernGrid?*
- *What changes is NorthernGrid making?*



## General changes at NorthernGrid:

- *NWPP now is Western Power Pool*
- *Technical analysis to be moved in-house*
- *New member – welcome NV Energy!*
- *Some interregional projects are now regional projects*
- *New MC and MPC co-chairs – welcome Mike Magruder (MC) and Rikin Shah (MPC)*
- *DOE study outreach*



# Northern Grid

## Next Steps after 2020-21 cycle:

*Debrief / Lessons Learned – solicit stakeholder input*

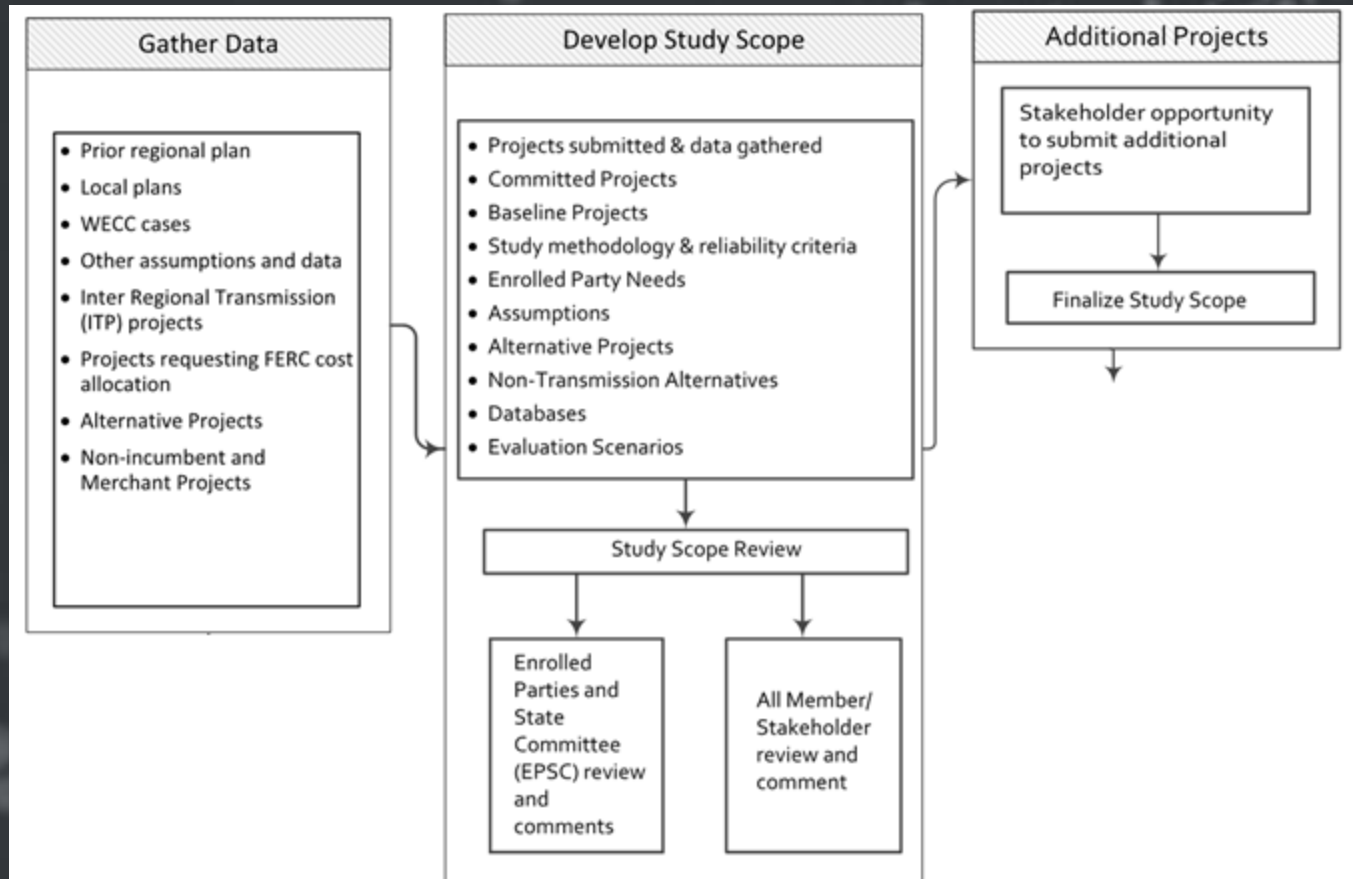
- *Review of study scope development process*
- *Increased coordination with Enrolled Parties and States Committee to develop the study scope*
- *Request for improved interface between interregional needs*
- *Outreach to other resources performing related assessments (WECC, Department of Commerce)*
- *Desire for other case type options (WECC base case)*
- *PCM / Round Trip opportunities coordinated with WECC*



# NorthernGrid

## Study Scope Drafting Team

Study Scope Drafting Team (SSDT)  
Invites more stakeholder comments  
up-front in the study scope process.  
MPC still approves study scope





## Study Scope Drafting Team Discussion

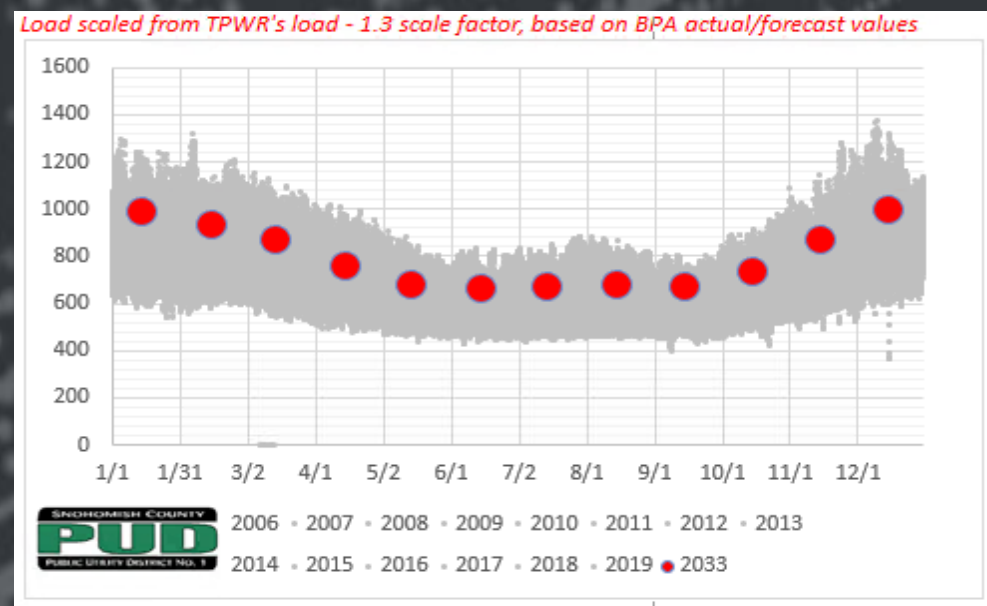
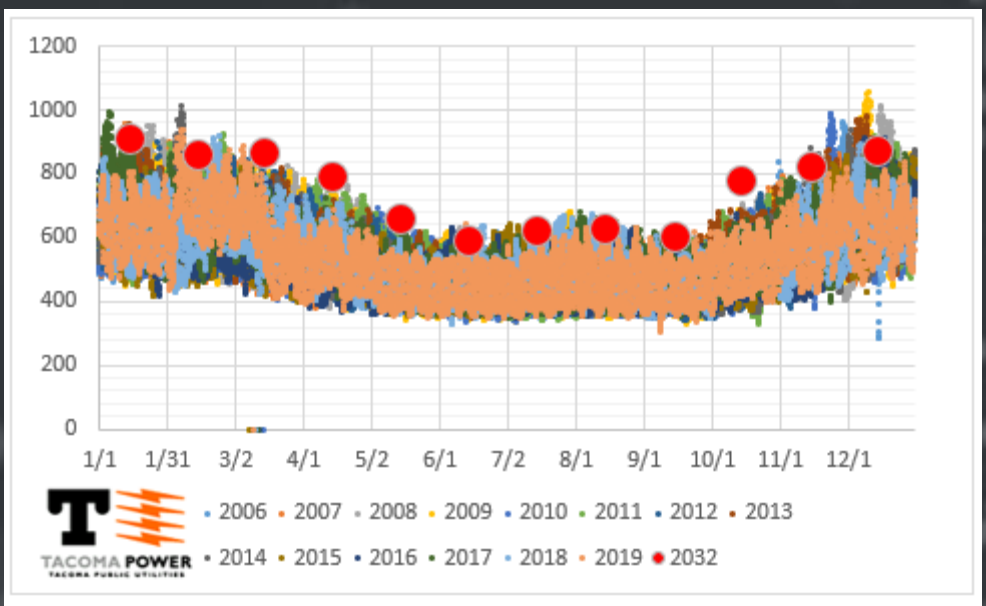
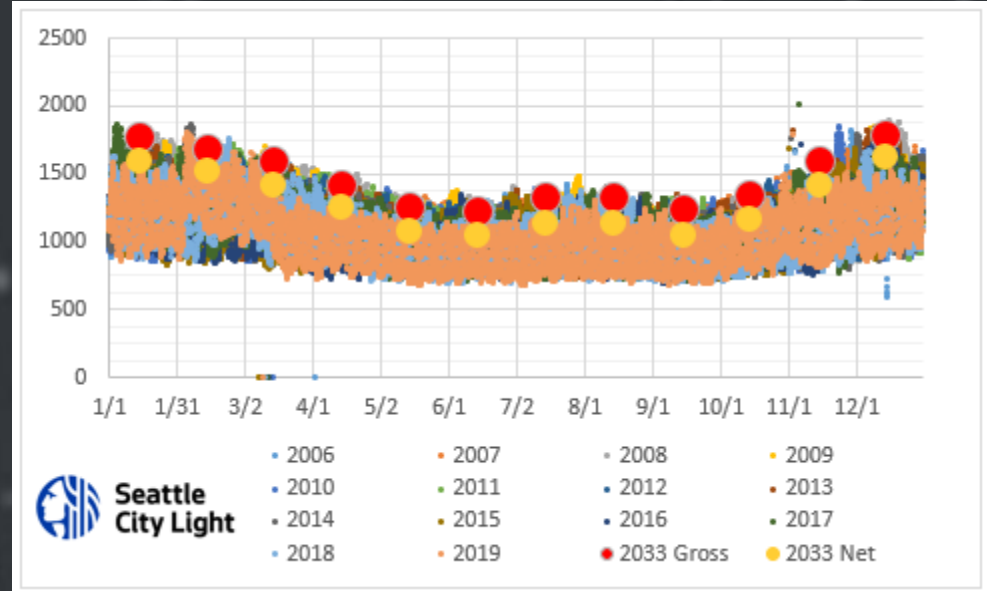
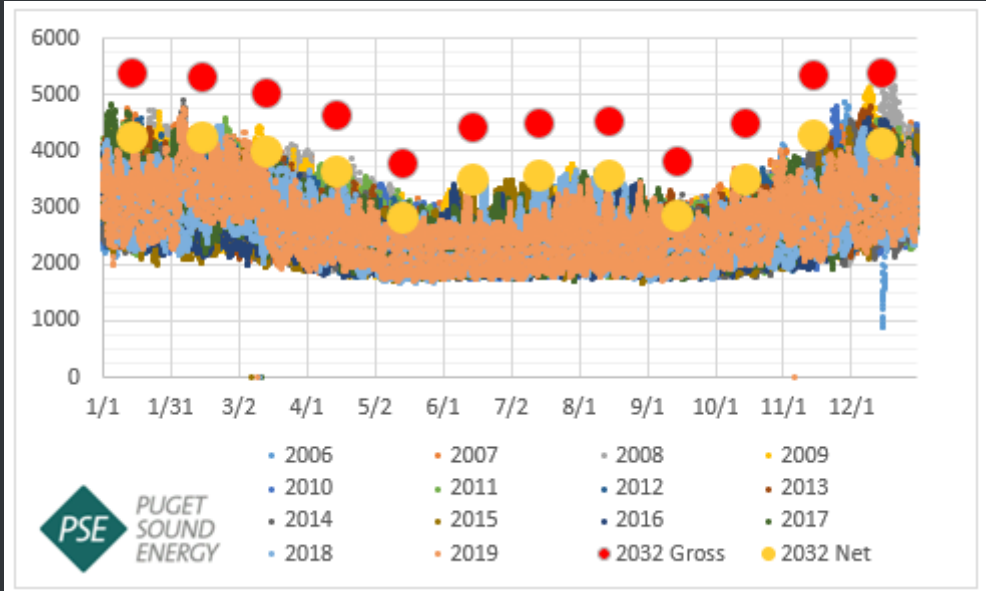
- *Significant state policy changes with potential for significant regional changes (an understatement!)*
- *Electrification, EVs, Conservation, Demand Side Management*
- *Differences between IRP, L&R, and WECC base case data sets*
- *Appropriate data sets for primary analysis versus sensitivity*
- *Seasonal / system conditions to assess*
- *Tool use and appropriateness for data conclusions*
- *Potential for economic study options*



## Member Data Submittal Window:

- *The NorthernGrid member data submittal window closed February 22, 2022*
- *Deadline for Developer project submittals is March 31*
- *Data submittals are being being review for completeness.*
- *Discussion of L&R submittal versus IRP contents*
- *Conservation and DSM a key factor*

# Member Load Submittals - Puget Sound region

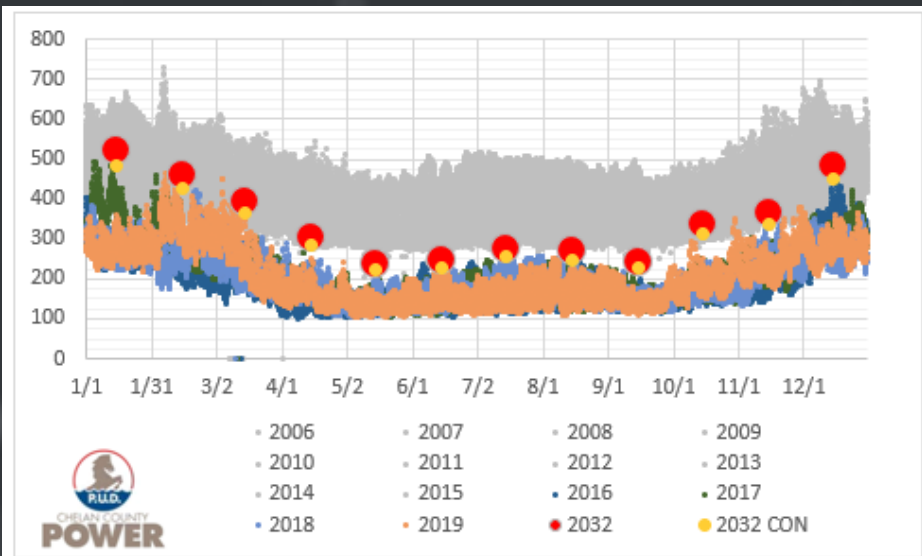
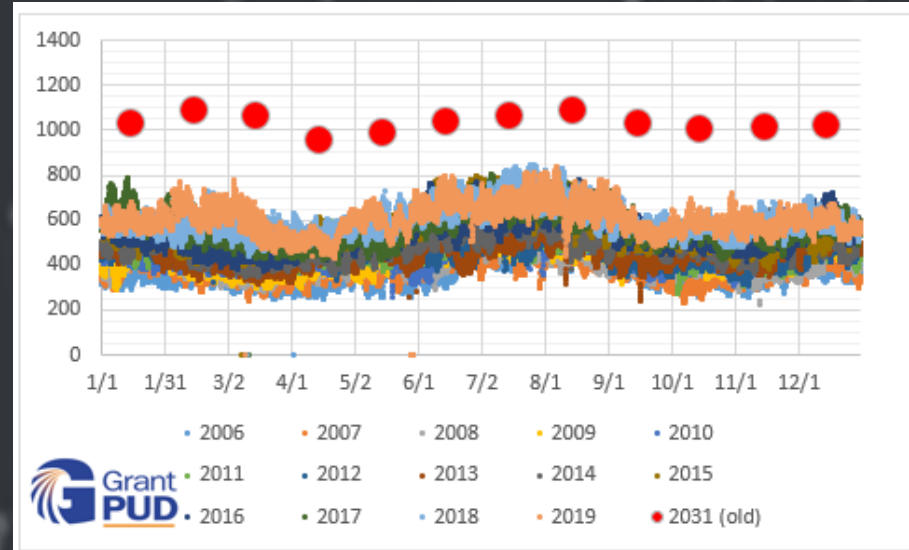
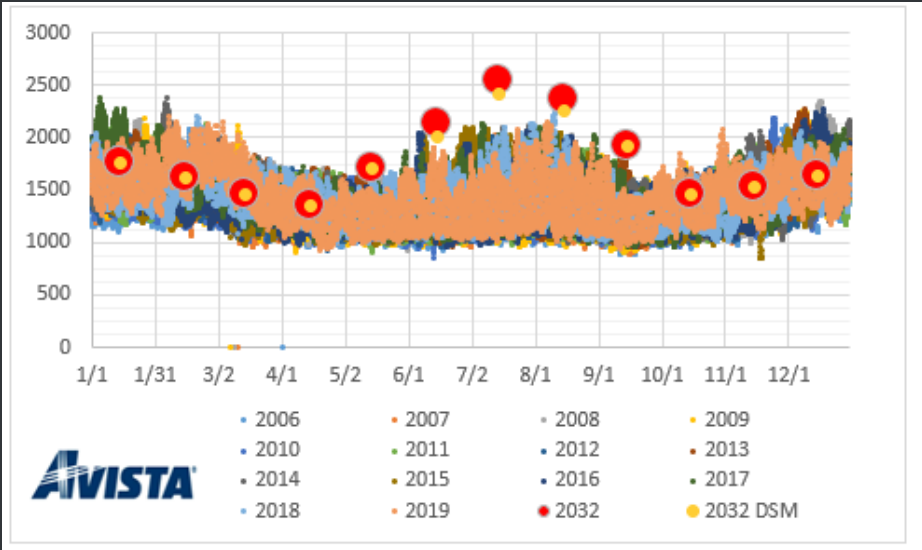


Historic loads from FERC 714 reporting

*SNPD not a BA so doesn't have FERC 714 hourly reporting - TPWR shape used and scaled to approximate SNPD load profile*

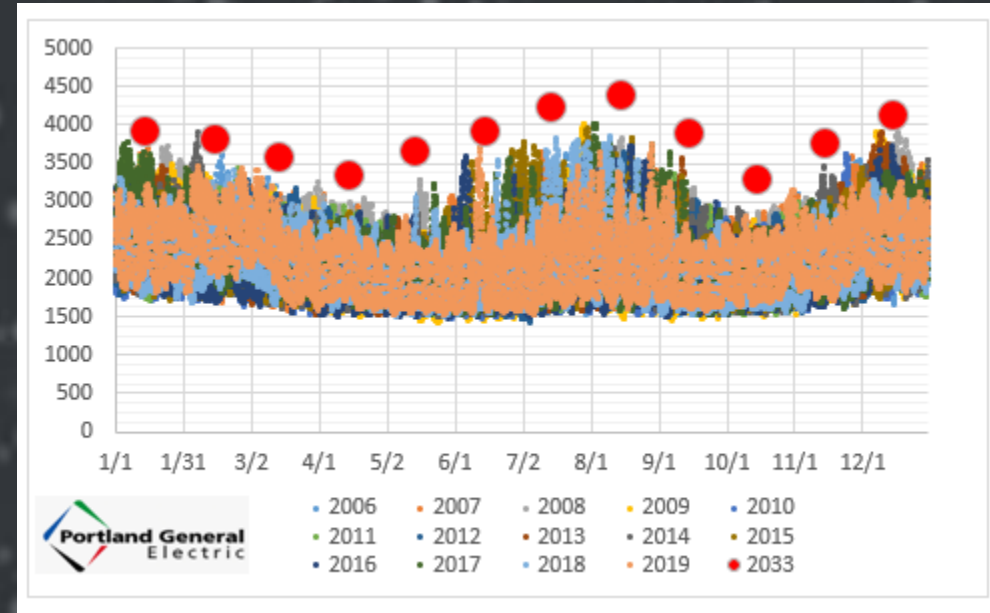
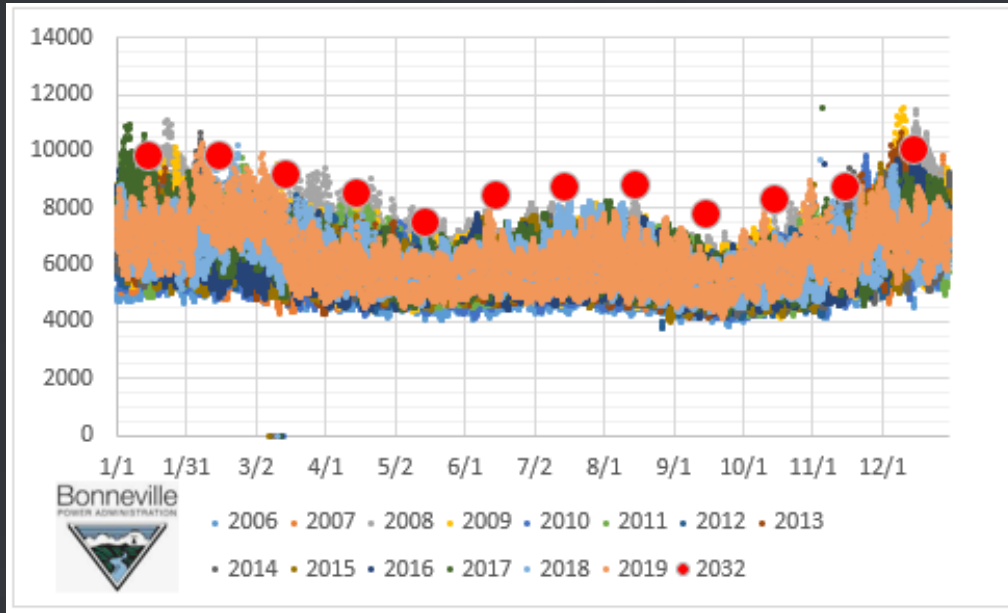
# Member Load Submittals – Eastern WA / North ID Utilities

Historic loads from FERC 714 reporting





# Member Load Submittals – BPA, PGE

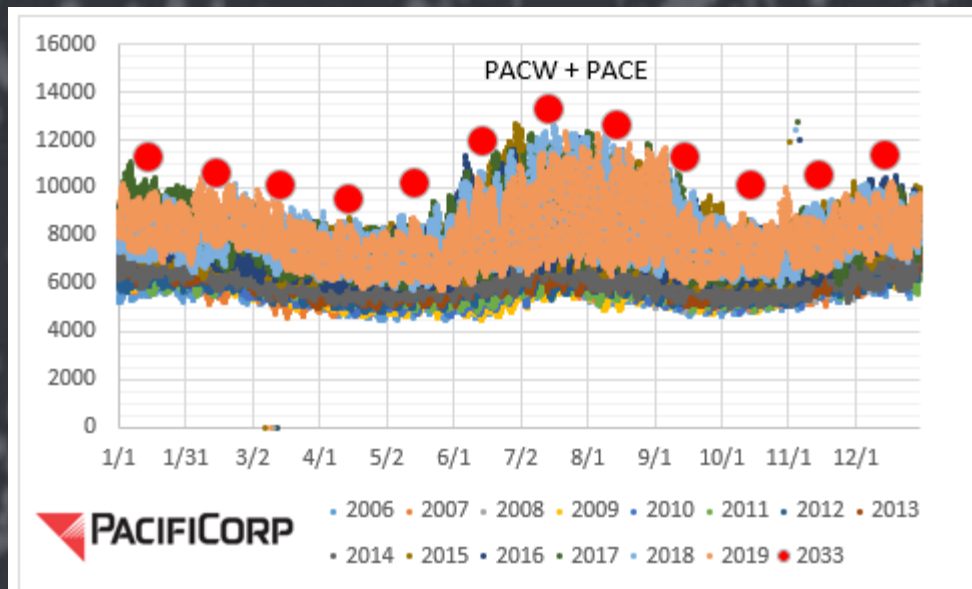
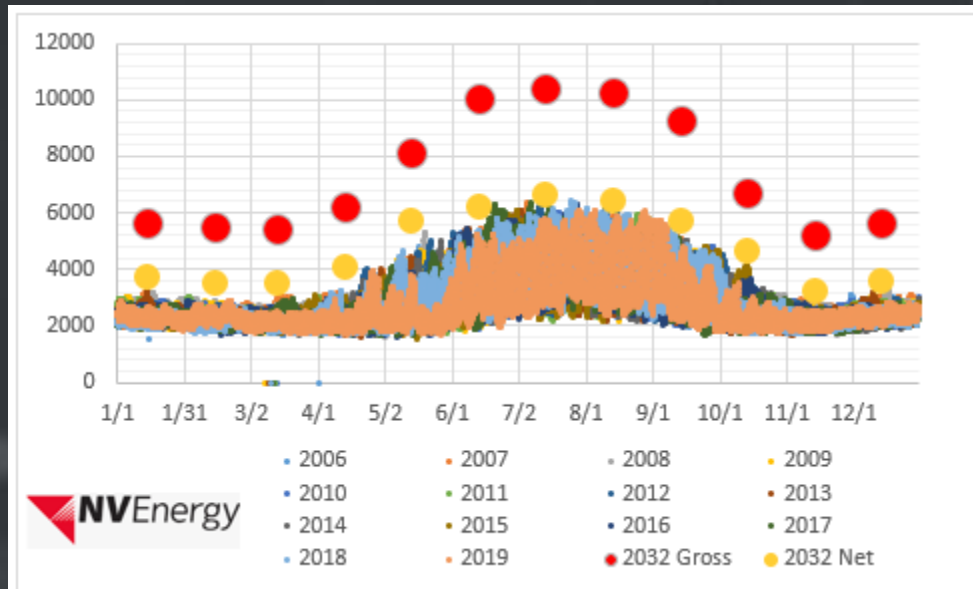
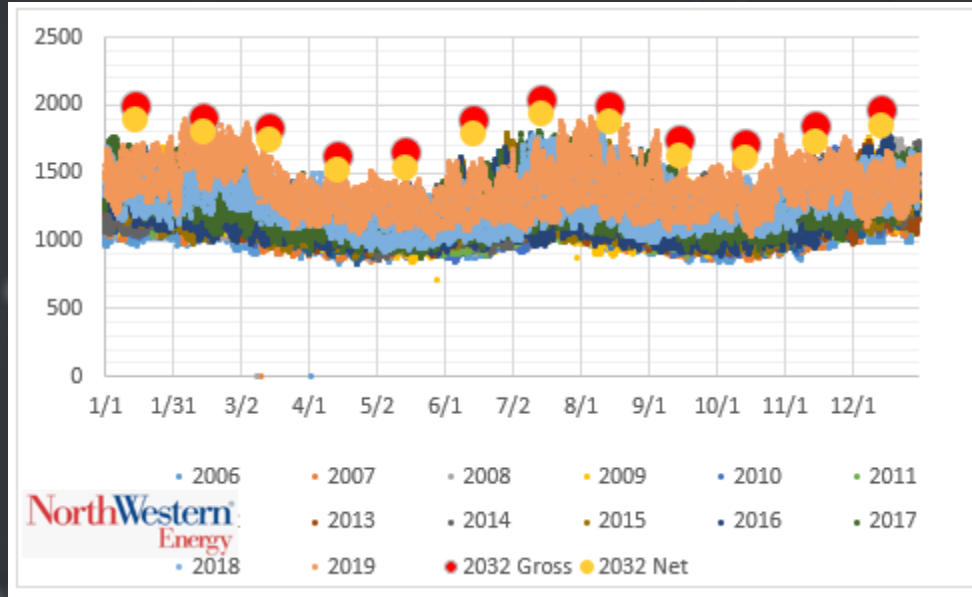
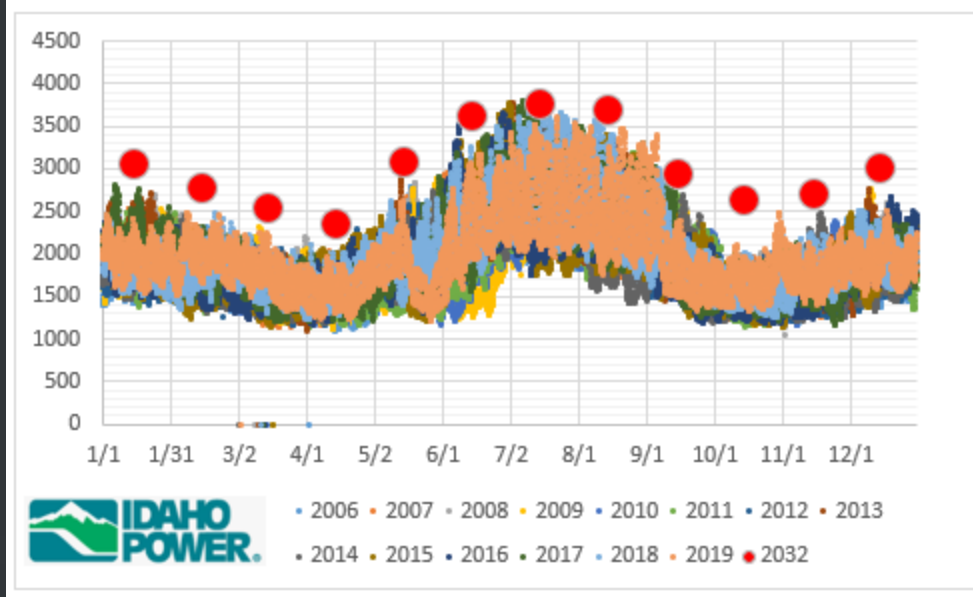


Historic loads from FERC 714 reporting

# Member Load Submittals - Mountain and Basin region

Historic loads from FERC 714 reporting

PACW and PACE combined



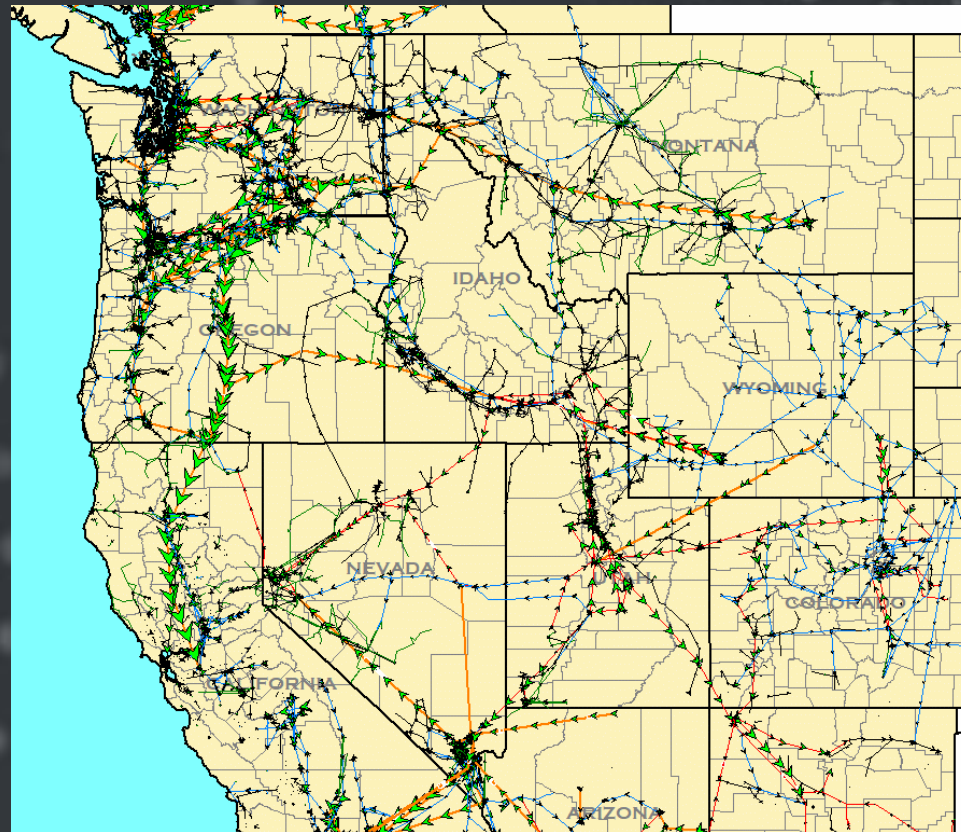
## Resource Changes :

- *Conversation regarding IRP level needs, L&R acceptable reporting, and WECC base case level modeling.*
- *With new resources, capacity factor needs create potential for oversupply.*
- *PCM dispatch challenges for zero cost resources*
- *Additional challenges for treatment of battery and other storage*

Generation	Add	Retire
AVA	2226	0
BHE	0	0
BPA	524	0
CHPD	0	0
Grant	0	0
IPC	388	775
NVE	3491	1237
NWMT	343	0
PACE/W	9401	6434
PGE	18.9	0
PSE	0	370
SCL	0	0
SNPD	0	0
TPWR	0	0
<b>Total</b>	<b>16392</b>	<b>8816</b>



Any Questions?





NorthernGrid

**THANK  
YOU!**